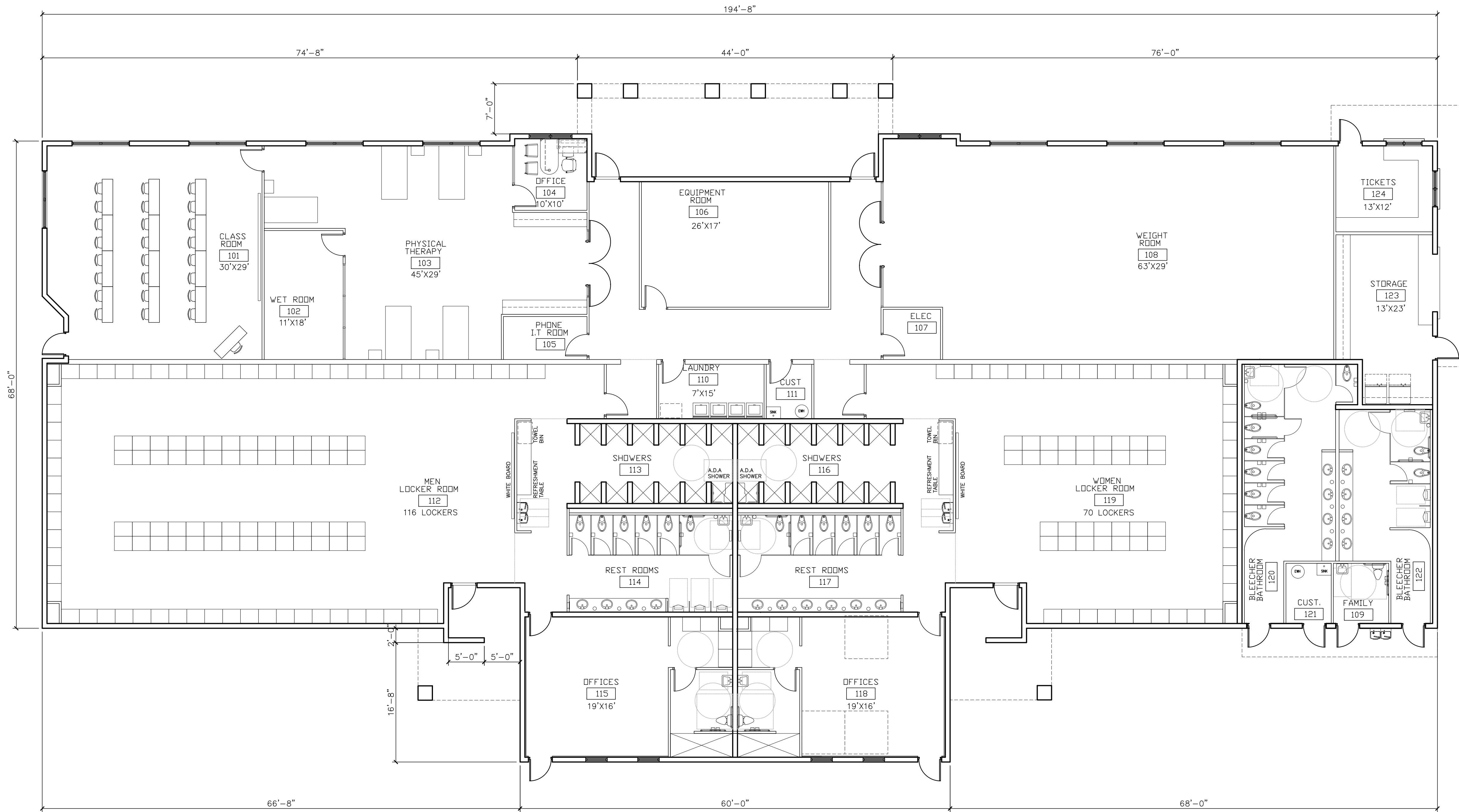
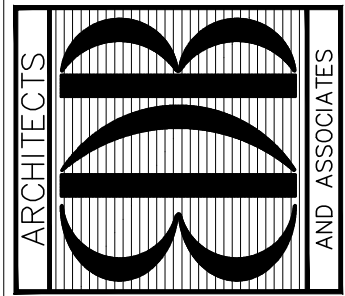


AREAS	
BUILDING AREA	14,042 SF



SCHMATIC # 5  
08/08/17

EDLUND · DRITENBAS · BINKLEY  
ARCHITECTS AND ASSOCIATES, P.A.  
AR-AA 000886  
160 SOUTH WEST 12th AVENUE  
DEERFIELD BEACH, FLORIDA 33442  
PHONE: (954) 429-0995



SEAL:  
ALEXANDRO BORRERO  
AR-0217

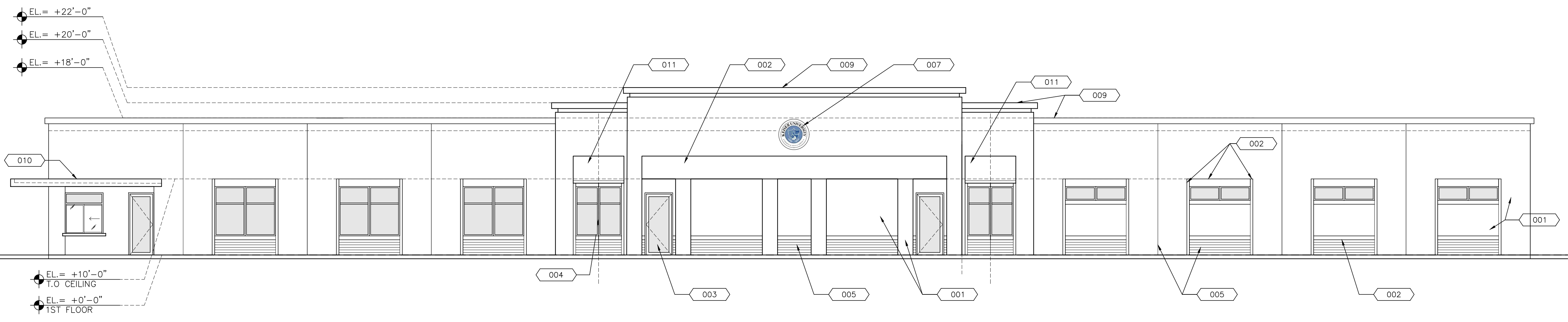
PROJECT: KEISER UNIVERSITY  
ATHLETICS BUILDING  
2600 North Military Trail, West Palm Beach, FL 33409  
FOR: KEENAN DEVELOPMENT GROUP, INC.  
1900 WEST COMMERCIAL BOULEVARD, SUITE #200  
FORT LAUDERDALE, FLORIDA 33309

NO.	DATE	REVISIONS

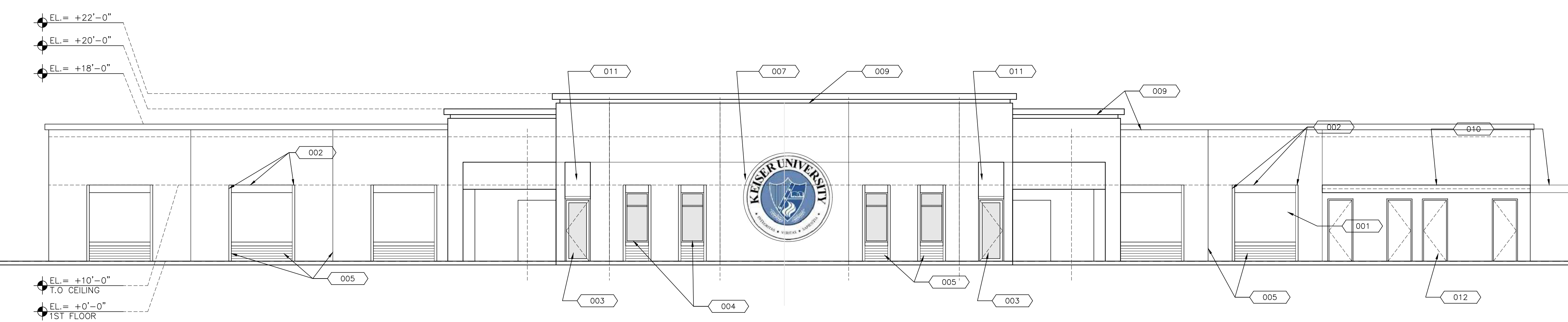
© AUG. '17 THESE PLANS AND THE INFORMATION SHOWN HEREIN ARE THE PROPERTY OF EDLUND & DRITENBAS, ARCHITECTS, P.A. AND REPRODUCTIONS, DISSEMINATION OR USE IN WHOLE OR IN PART IS EXPRESSLY PROHIBITED WITHOUT WRITTEN PERMISSION.

COMM. NO: 010216  
DATE: 08/08/17  
BY: AB  
CH'KD: GDE

SHEET NO.  
A1.0  
OF FIFTY THREE



1 NORTH ELEVATION (entrance)  
A2.0 SCALE: 1/8"=1'-0"

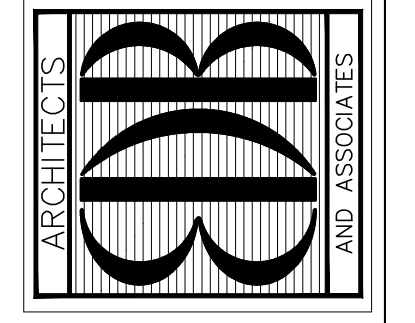


2 SOUTH ELEVATION (facing field)  
A2.0 SCALE: 1/8"=1'-0"

MATERIALS

- 001 SMOOTH STUCCO FINISH ON CMU BLOCK.
- 002 RAISED STUCCO BAND
- 003 ALUMINUM STOREFRONT DOOR
- 004 ALUMINUM STOREFRONT WINDOW
- 005 STUCCO REVEAL
- 006 "OX" HORIZONTAL ROLLER WINDOW
- 007 SIGNAGE (BY OTHERS)
- 008 O.H. ROLLING DOOR
- 009 DECORATIVE BANDING
- 010 CONC. CANOPY
- 011 CANVAS AWNING
- 012 HOLLOW METAL DOOR

EDLUND · DRITENBAS · BINKLEY  
ARCHITECTS AND ASSOCIATES, P.A.  
AR-AA 000886  
160 SOUTH WEST 12th AVENUE  
DEERFIELD BEACH, FLORIDA 33442  
PHONE: (954) 429-0995



SEAL:  
ALEJANDRO BORBERO  
ARCHITECT

PROJECT: KEISER UNIVERSITY  
ATHLETICS BUILDING  
2600 North Military Trail, West Palm Beach, FL 33409  
FOR: KEENAN DEVELOPMENT GROUP, INC.  
1900 WEST COMMERCIAL BOULEVARD, SUITE #200  
FORT LAUDERDALE, FLORIDA 33309

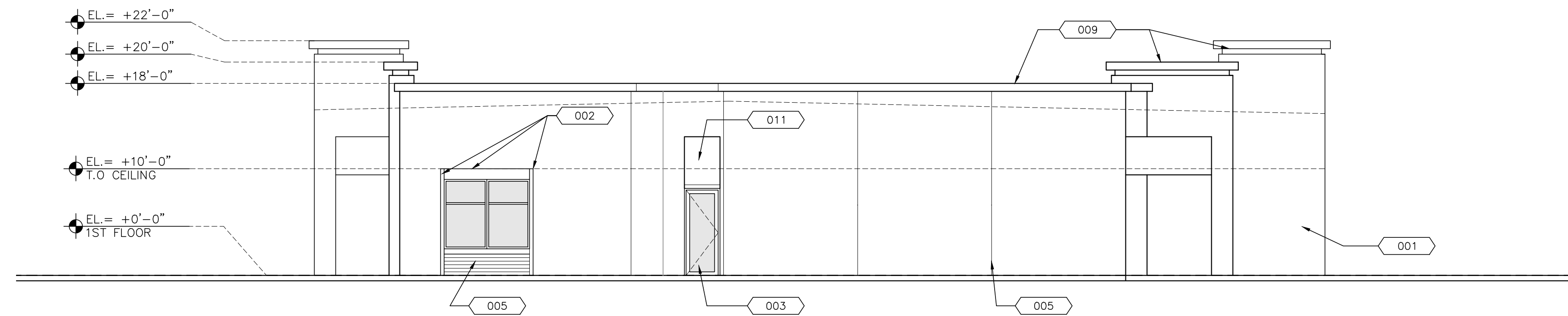
NO.	DATE	REVISIONS

© AUG. '17 THESE PLANS AND THE INFORMATION SHOWN HEREIN ARE THE PROPERTY OF EDLUND & DRITENBAS, ARCHITECTS, P.A. AND REPRODUCTIONS, DISSEMINATION OR USE IN WHOLE OR IN PART IS EXPRESSLY PROHIBITED WITHOUT WRITTEN PERMISSION.

COMM. NO: 010216  
DATE: 08/08/17  
BY: AB  
CH'KD: GDE

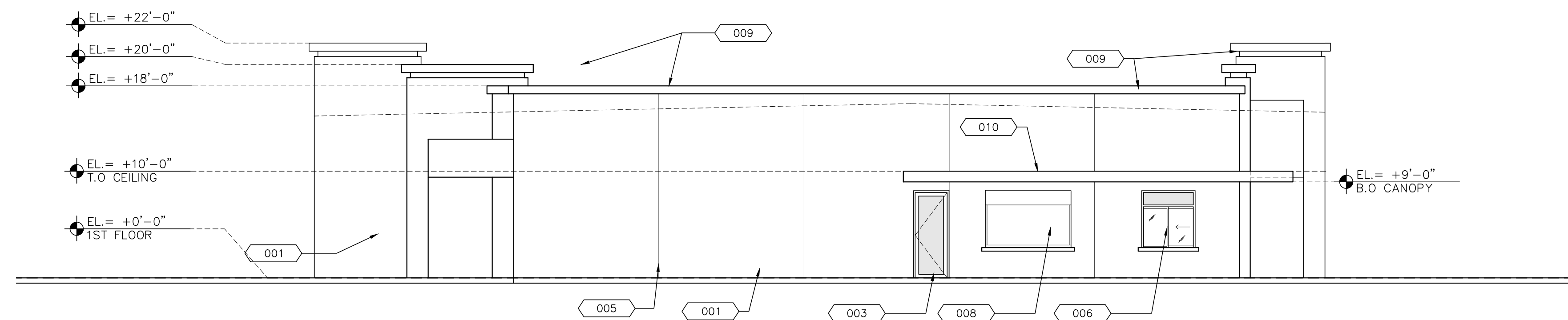
SHEET NO.  
A2.0  
OF FIFTY THREE

SCHMATIC # 5  
08/08/17



1 WEST ELEVATION

A2.1 SCALE: 1/8"=1'-0"



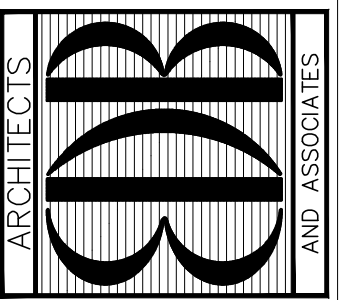
2 EAST ELEVATION

A2.1 SCALE: 1/8"=1'-0"

MATERIALS

- 001 SMOOTH STUCCO FINISH ON CMU BLOCK.
- 002 RAISED STUCCO BAND
- 003 ALUMINUM STOREFRONT DOOR
- 004 ALUMINUM STOREFRONT WINDOW
- 005 STUCCO REVEAL
- 006 "OX" HORIZONTAL ROLLER WINDOW
- 007 SIGNAGE (BY OTHERS)
- 008 O.H. ROLLING DOOR
- 009 DECORATIVE BANDING
- 010 CONC. CANOPY
- 011 CANVAS AWNING
- 012 HOLLOW METAL DOOR

EDLUND · DRITENBAS · BINKLEY  
 ARCHITECTS AND ASSOCIATES, P.A.  
 AR-AA 000886  
 160 SOUTH WEST 12th AVENUE  
 DEERFIELD BEACH, FLORIDA 33442  
 PHONE: (954) 429-0995



SEAL:  
 ALEXANDRO BORBERO  
 APR 27

PROJECT: KEISER UNIVERSITY  
 ATHLETICS BUILDING  
 2600 North Military Trail, West Palm Beach, FL 33409

FOR: KEENAN DEVELOPMENT GROUP, INC.  
 1900 WEST COMMERCIAL BOULEVARD, SUITE #200  
 FORT LAUDERDALE, FLORIDA 33309

NO.	DATE	REVISIONS

© AUG. '17 THESE PLANS AND THE INFORMATION SHOWN HEREIN ARE THE PROPERTY OF EDLUND & DRITENBAS, ARCHITECTS, P.A. AND REPRODUCING, DISSEMINATING OR OTHERWISE USING IN WHOLE OR IN PART IS EXPRESSLY PROHIBITED WITHOUT WRITTEN PERMISSION.

COMM. NO: 010216  
 DATE: 08/08/17  
 BY: AB  
 CH'KD: GDE

SCHMATIC # 5  
 08/08/17

SHEET NO.  
 A2.1  
 OF FIFTY THREE