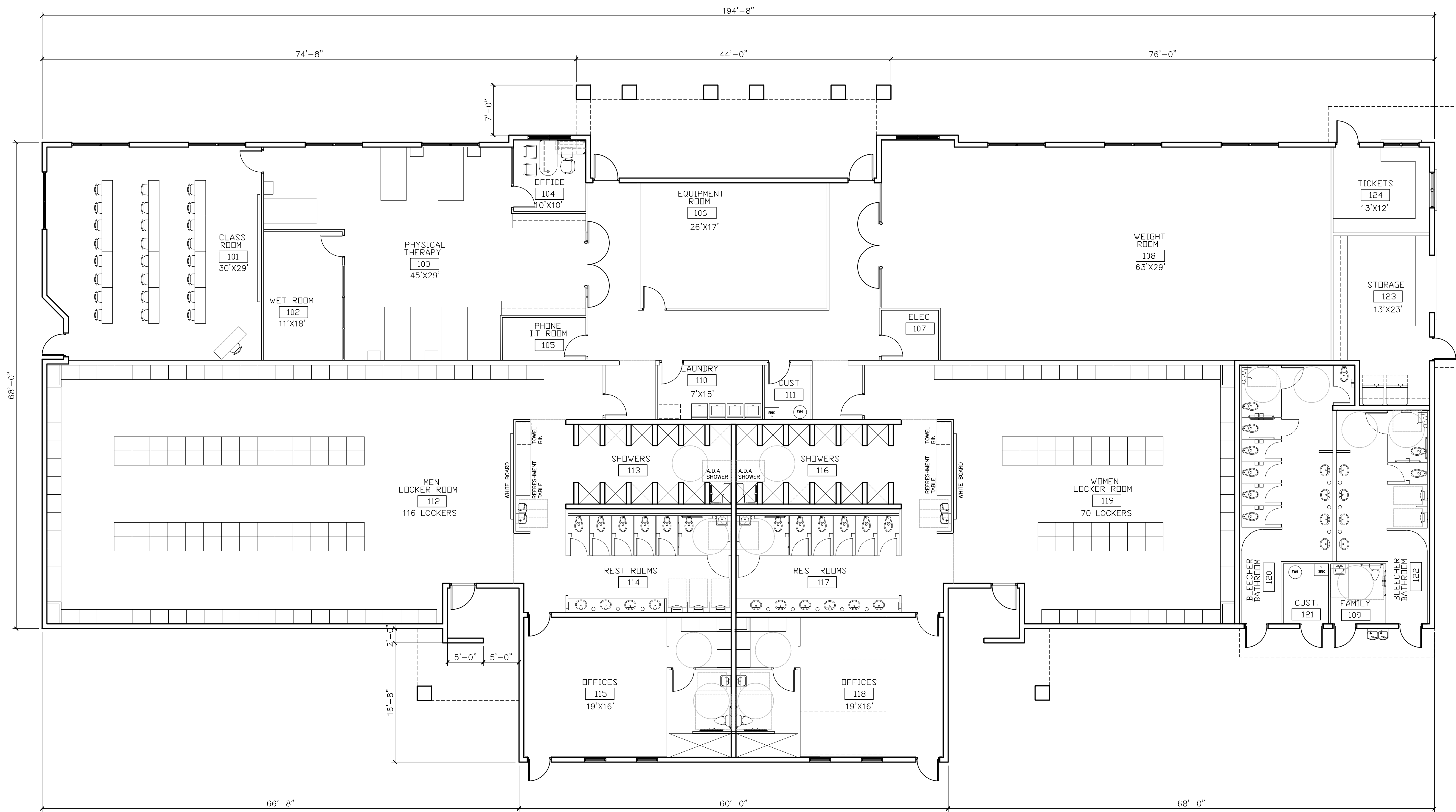
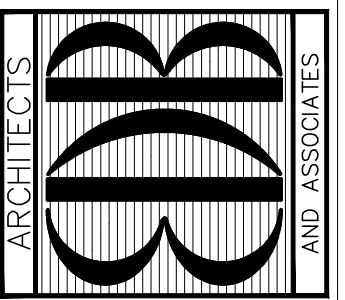


AREAS	
BUILDING AREA	14,042 SF



SCHMATIC # 5  
08/08/17

EDLUND · DRITENBAS · BINKLEY  
ARCHITECTS AND ASSOCIATES, P.A.  
AR-AA 000886  
160 SOUTH WEST 12th AVENUE  
DEERFIELD BEACH, FLORIDA 33442  
PHONE: (954) 429-0995



SEAL:  
ALEXANDRO BORRERO  
APR217

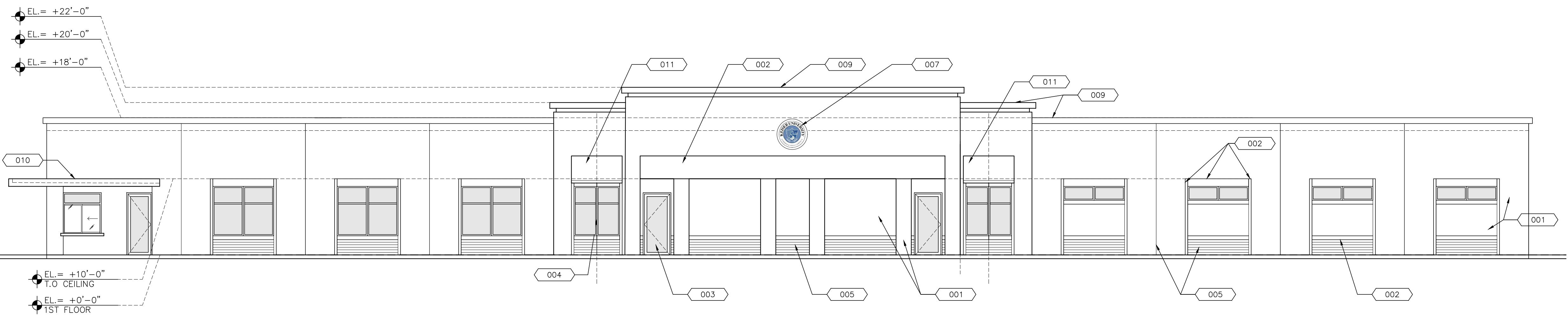
PROJECT: KEISER UNIVERSITY  
ATHLETICS BUILDING  
2600 North Military Trail, West Palm Beach, FL 33409  
FOR: KEENAN DEVELOPMENT GROUP, INC.  
1900 WEST COMMERCIAL BOULEVARD, SUITE #200  
FORT LAUDERDALE, FLORIDA 33309

NO.	DATE	REVISIONS

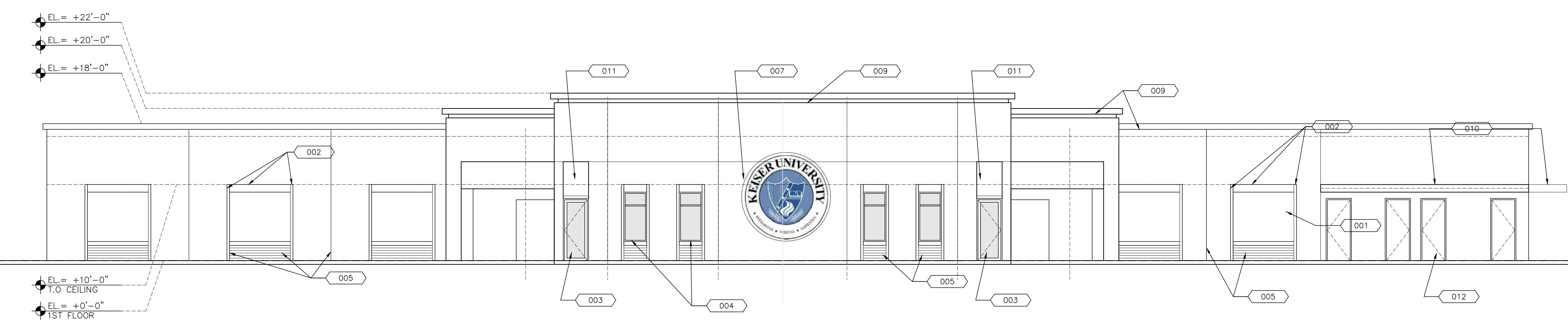
© AUG. '17 THESE PLANS AND THE INFORMATION SHOWN HEREIN ARE THE PROPERTY OF EDLUND & DRITENBAS, ARCHITECTS, P.A. AND REPRODUCTIONS, DISSEMINATION OR USE IN WHOLE OR IN PART IS EXPRESSLY PROHIBITED WITHOUT WRITTEN PERMISSION.

COMM. NO: 010216  
DATE: 08/08/17  
BY: AB  
CH'KD: GDE

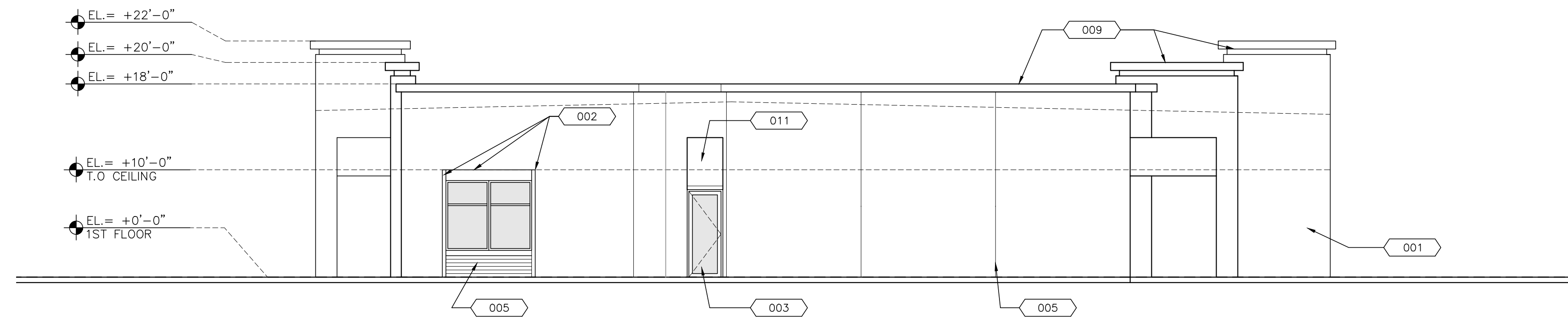
SHEET NO.  
A1.0  
OF FIFTY THREE



**NORTH ELEVATION (entrance)**  
SCALE: 1/8"=1'-0"

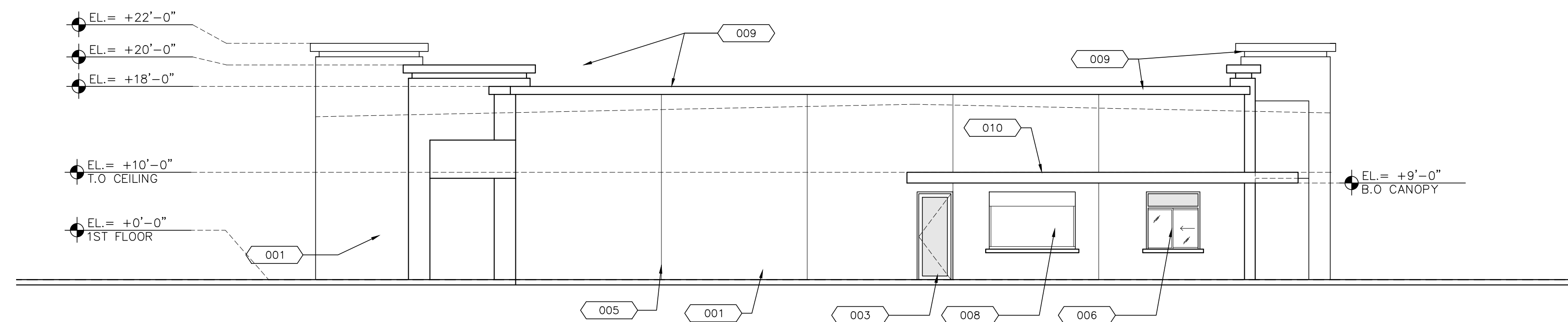


**SOUTH ELEVATION (facing field)**  
SCALE: 1/8"=1'-0"



1 WEST ELEVATION

A2.1 SCALE: 1/8"=1'-0"



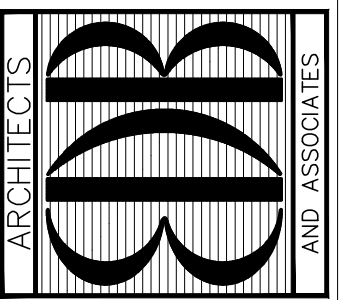
2 EAST ELEVATION

A2.1 SCALE: 1/8"=1'-0"

MATERIALS

- 001 SMOOTH STUCCO FINISH ON CMU BLOCK.
- 002 RAISED STUCCO BAND
- 003 ALUMINUM STOREFRONT DOOR
- 004 ALUMINUM STOREFRONT WINDOW
- 005 STUCCO REVEAL
- 006 "OX" HORIZONTAL ROLLER WINDOW
- 007 SIGNAGE (BY OTHERS)
- 008 O.H. ROLLING DOOR
- 009 DECORATIVE BANDING
- 010 CONC. CANOPY
- 011 CANVAS AWNING
- 012 HOLLOW METAL DOOR

EDLUND · DRITENBAS · BINKLEY  
ARCHITECTS AND ASSOCIATES, P.A.  
AR-AA 000886  
160 SOUTH WEST 12th AVENUE  
DEERFIELD BEACH, FLORIDA 33442  
PHONE: (954) 429-0995



SEAL:  
ALEXANDRO BORBERO  
ARCHITECT  
AR-9527

PROJECT: KEISER UNIVERSITY  
ATHLETICS BUILDING  
2600 North Military Trail, West Palm Beach, FL 33409  
FOR: KEENAN DEVELOPMENT GROUP, INC.  
1900 WEST COMMERCIAL BOULEVARD, SUITE #200  
FORT LAUDERDALE, FLORIDA 33309

NO.	DATE	REVISIONS

© AUG. '17 THESE PLANS AND THE INFORMATION SHOWN HEREIN ARE THE PROPERTY OF EDLUND & DRITENBAS, ARCHITECTS, P.A. AND REPRODUCTIONS, DISSEMINATION OR USE IN WHOLE OR IN PART IS EXPRESSLY PROHIBITED WITHOUT WRITTEN PERMISSION.

COMM. NO: 010216  
DATE: 08/08/17  
BY: AB  
CH'KD: GDE

SHEET NO.  
A2.1  
OF FIFTY THREE

SCHMATIC # 5  
08/08/17